

# ILS or LOC RWY 16L

FORT WORTH ALLIANCE (AFW)

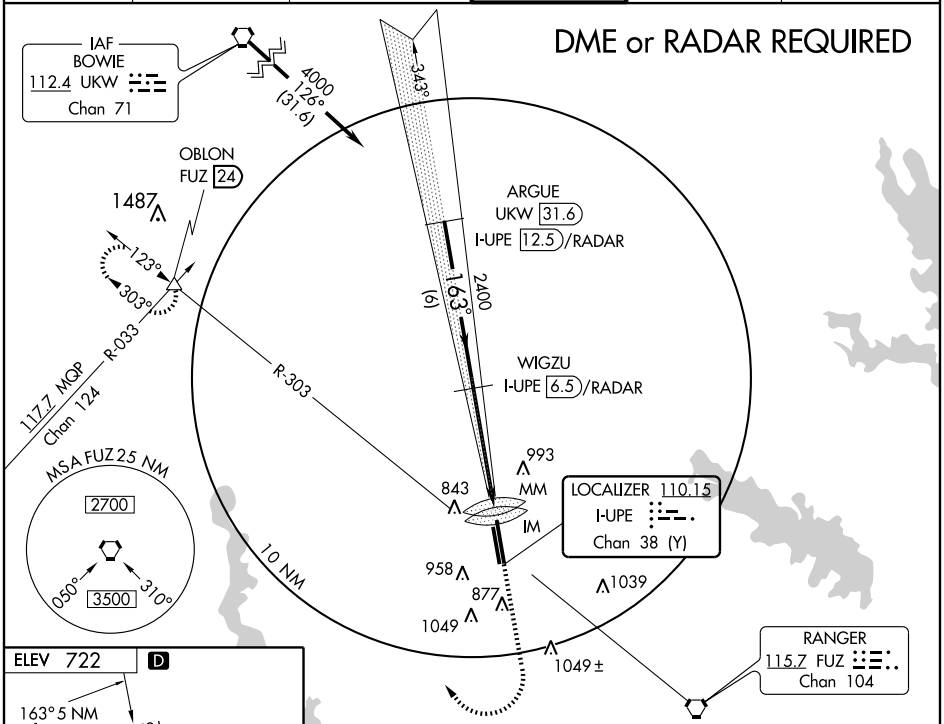
LOC I-UP <b>110.15</b> Chan <b>38 (Y)</b>	APP CRS <b>163°</b>	Rwy 16L Idg <b>8210</b> TDZE <b>715</b> Apt Elev <b>722</b>	Rwy 16R Idg <b>7118</b> TDZE <b>714</b> Apt Elev <b>722</b>
---	------------------------	---	---

**⚠** Circling not authorized east of runway 16L-34R. For imperative ALSF-2, increase S-ILS-16L Cat E visibility to RVR 4000, increase S-LOC-16L Cat E visibility to 1/2.

ALSF2 Rwy 16L

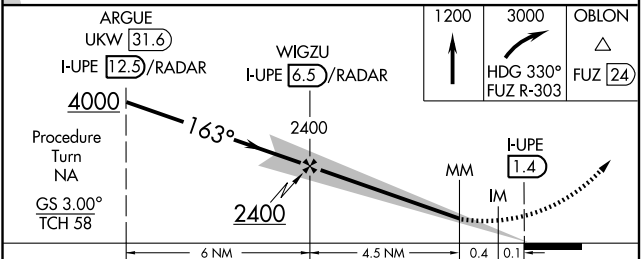
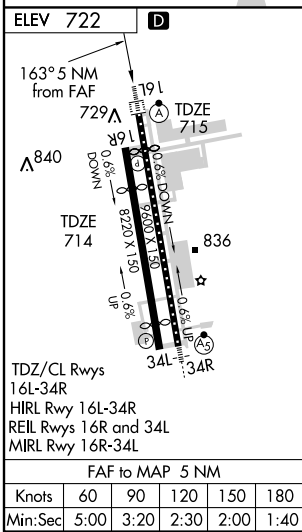
**MISSED APPROACH:** Climb to 1200 then climbing right turn to 3000 via heading 330° and FUZ VORTAC R-303 to OBLOM Int/FUZ 24 DME and hold.

ATIS <b>126.925</b>	ASOS <b>126.925</b>	REGIONAL APP CON <b>118.1 306.95</b>	ALLIANCE TOWER <b>135.15 288.15</b>	GND CON <b>132.65 306.2</b>	CLNC DEL <b>128.725</b>
------------------------	------------------------	---	--	--------------------------------	----------------------------



SC-2, 02 JUL 2009 to 30 JUL 2009

SC-2, 02 JUL 2009 to 30 JUL 2009



CATEGORY	A	B	C	D	E
S-ILS 16L	915/18 200 (200-1/2)				
S-LOC 16L	1120/24 405 (400-1/2)		1120/40 405 (400-3/4)		1120/50 405 (400-1)
CIRCLING	1200-1 478 (500-1)	1260-1 538 (600-1)	1320-1 1/2 598 (600-1 1/2)	1380-2 658 (700-2)	1380-2 1/4 658 (700-2 1/4)
SIDESTEP 16R	1120-1 406 (400-1)		1120-1 1/2 406 (400-1 1/2)	1120-2 406 (400-2)	1120-2 1/4 406 (400-2 1/4)